



Nursery on the Heath  
Hatfield Heath

Hertfordshire CM22 7EB

Tel. 01279 730 331

[enquiries@nurseryontheheath.co.uk](mailto:enquiries@nurseryontheheath.co.uk)

[www.nurseryontheheath.co.uk](http://www.nurseryontheheath.co.uk)



**Wednesday 16<sup>th</sup> October**  
**Photography Session**

**Thursday 31<sup>st</sup> October**  
**Halloween**

**Monday 11<sup>th</sup> November**  
**Remembrance Day**

**Tuesday 17<sup>th</sup> December**  
**Children's Christmas Party**



**Christmas**  
**Closing**

We will remain open until  
6:30pm on Tuesday 24<sup>th</sup>  
December. Our doors will  
then be closed between  
Wednesday 25<sup>th</sup> December  
and Wednesday 1<sup>st</sup> January.  
We re-open at 7.30am on  
Thursday 2<sup>nd</sup> January 2020.



## Autumn Term Newsletter September 2019

*"At Nursery on the Heath we strongly promote mutual respect, inclusion and fairness for every child and their family who walk through our door."*

A very BIG welcome to all our new babies, children, mummies, daddies and carers who have recently join Nursery on the Heath (a.k.a. NOTH). We look forward to getting to know you and are honoured to share your child's learning journey during these important early years.

This Autumn Term brings a flurry of activities where the children will be immersed in experiences from the world around them to ignite, engage and enrich play and learning. From Harvest Festival to Remembrance Day to our termly fundraising event. All this and much more even before the Christmas festivities begin!

The children in the Barn have added responsibilities in October with trips to Holy Trinity Church to give our box of food donations to the local food bank and to Cammas Hall in search for pumpkins. Then in November they'll be off to the Christmas Tree Farm to hand pick the Nursery's trees! More details on page four.

Should you have any questions about nursery life, sessions, invoicing, funding or your little one's learning and development, please pop into the office for a chat. Our door is always open.

Sally and Julie



# Think Pink!

This term Nursery on the Heath is taking part to support the National Breast Cancer Awareness Campaign that runs throughout October. With many families who have been affected by breast cancer, together with a nursery that has a totally female workforce, it is an awareness campaign very close to our hearts.

From next week, the children and staff will be organising an array of 'pink' activities such as making and baking 'pink' decorated cakes & cookies and wearing pink clothes/hats/shoes in return for donations, as well as a sponsored jump!

Our aim is to raise £1,000. We would like half of funds raised to be donated to Cancer Research UK. Current research aims are that by 2050, everyone who develops breast cancer will live and is supported to live well. To achieve this ambition, funds donated to research will focus on four key areas – risk and prevention, early detection and diagnosis, treatment and secondary breast cancer.

We would like the other half of funds raised to go towards buying the children a friendship bench in memory of loved ones lost. A space for the children to sit, think and remember those who have had a very special place in their heart and where friends can join them to connect, talk or simply hold hands in comfort.

**Wear it pink and please give generously**

# Employee of the Month



## Charlotte

“Charlotte has always got a big smile and loving arms to receive Walt, regardless of his mood. She shows him kindness, patience and love always and I know that Walt appreciates her as much as our entire family do.”

“Charlotte has been great with Olivia and settling her in to nursery life. I am so happy that Olivia is happy and how she has taken to Charlotte, which has made me feel a lot less anxious about leaving her.”

“Charlotte for her help with settling Grace and making a difficult time a lot easier for us.”

“Since becoming Room Leader Charlotte has grown enormously. Her care and commitment to the children, with the added responsibility that the position requires, is great to see and reassuring to us as parents. Charlotte is a credit to NOTH, loved by our daughter and I am sure the other children in equal amounts. Well done and thank you Charlotte!”

“I think Charlotte has made a really big impact on The Baby Room, always going above her requirements. Good job Charlotte!”

# Reminders

## Terms & Conditions Contract

Please note, we have recently updated our T&Cs. If you have not signed a copy, please pop into the office to do so. Individual reminders will be sent out shortly.

## Shared Settings

If your child attends another nursery setting or is looked after by a childminder, please let us know the details. It is part of our duty of care to work in partnership with other early years professionals to ensure your child receives consistency of care.

## Contact Details

Please remember to let the office know if you have recently moved to a new house or are soon planning to, if have a new email address or mobile phone number. For safeguarding and accounting purposes, we must keep our records up-to-date.

## Winter Warmers

With the winter months ahead, please remember to bring in appropriate warm jackets, hats and gloves for outdoor play, as well as a pair of slippers for your child to wear inside to keep their little toes warm.

## Remember!



The UK changes its clocks every Spring and Autumn to mark the beginning and end of British Summer Time (BST), giving us an extra hour of evening daylight.

On Sunday 27<sup>th</sup> October it will be time to turn your clocks & watches back by one hour to revert back to Greenwich Mean Time (GMT), the standard time zone against which all others in the world are referenced!



At the start of each term the nursery practices its emergency evacuation procedure. Through this termly exercise the children become aware that when the smoke alarm sounds, they must:

- ~ Stop playing and listen to instructions ~
- ~ Walk calmly towards the nearest fire exit door ~
- ~ Meet at the assembly point ~
- ~ Listen for their name when the register is taken ~

Should the fire alarm go off when you are on the premises, you will be escorted to our assembly point which is in front of Dove Cote Cottage.





# What Is Forest School?



Forest School is an inspirational process, that offers ALL learners regular opportunities to achieve and develop confidence and self-esteem through hands-on learning experiences in a woodland or natural environment with trees. It is a specialised learning approach that sits within and complements the wider context of outdoor and woodland education. The ethos is shared by thousands of trained practitioners across the UK and beyond. Its roots reach back to early years pioneers in outdoor learning and across the sea to Scandinavia.

At Forest School all participants are viewed as:



- equal, unique and valuable
- competent to explore & discover
- entitled to experience appropriate risk and challenge
- entitled to choose, and to initiate and drive their own learning and development
- entitled to experience regular success
- entitled to develop positive relationships with themselves and other people
- entitled to develop a strong, positive relationship with their natural world



Our Forest School woodland is located at Birchanger Woods. The parent meeting point is located at:  
77 - 99 Northolt Avenue, Bishop's Stortford, Hertfordshire, CM23 5DS.  
The team have two emergency mobile phones: 07547 330 074 and 07922 518 982.

If you have any Forest School queries or questions, please have a chat with Elaine or Holly or email [enquiriesnothforestschool@yahoo.com](mailto:enquiriesnothforestschool@yahoo.com)

### Tuesdays

- 1<sup>st</sup> October
- 8<sup>th</sup> October
- 15<sup>th</sup> October
- 22<sup>nd</sup> October
- 29<sup>th</sup> October
- 5<sup>th</sup> November
- 12<sup>th</sup> November
- 19<sup>th</sup> November
- 26<sup>th</sup> November
- 3<sup>rd</sup> December

### Forest School Kit List

- Long sleeve thermal top & leggings**
- Warm clothes to wear over the top, such as jogging bottoms & long sleeve tops**
- Thermal socks underneath regular socks**
- 'Kipsta' gloves & waterproof gloves**
- Snood**
- Wellington boots with liners**
- Hat**
- Small waterproof rucksack containing:**
- Spare set of clothes & spare socks**
- Named water bottle**

### Thursdays

- 3<sup>rd</sup> October
- 10<sup>th</sup> October
- 17<sup>th</sup> October
- 24<sup>th</sup> October
- 31<sup>st</sup> October
- 7<sup>th</sup> November
- 14<sup>th</sup> November
- 21<sup>st</sup> November
- ~~28<sup>th</sup> November~~ \*
- 5<sup>th</sup> December

*\* Please note there is no FS on 28<sup>th</sup> November*

## **Trips for the children in The Barn**

- Monday 7<sup>th</sup> October - Harvest Festival at Holy Trinity Church**
- Tuesday 29<sup>th</sup> October - collecting pumpkins at Cammas Hall**
- Monday 11<sup>th</sup> November - laying a poppy wreath at the War Memorial**
- Friday 29<sup>th</sup> November - hand selecting trees at the Christmas Tree Farm**
- Wednesday 11<sup>th</sup> December - bell ringing at Holy Trinity Church**



# Pets Corner

## Stick Insects



Did you know that there are over 6,000 stick insect species on Earth?

Following the success of learning about the caterpillar **lifecycle** during the summer months, the children in the Barn started to care for stick insects!

They learnt that they only eat **fresh leaves** so have been feeding them small branches and brambles picked during their walks around the local village.

Did you know that when stick insects shed their skin, they hang upside down on their old skin?!



They have learnt they need water to maintain the right humidity so have been **spraying them with water**. They have learnt that the cage should be at least 3 times the body length of the insect in height and 2 times the body length in width to allow space for **molting**.

Did you know that some adult stick insects have wings?

## Meet our new friend ...

As pets can help meet the emotional needs of children and also provide the opportunity to learn how to be gentle and responsible for others, the Nursery has adopted a guinea pig! Currently, she is living in The Barn. The children have been talking about how guinea pigs need sheltered accommodation away from draughts; a large exercise area to run around in and stand fully upright, warm bedding to sleep in, fresh clean water to drink and grass-based pellets to eat.



However, our guinea pig has yet to be given a name! Help us choose - place your vote next to your favourite name from on the list in The Barn and we'll announce the winning name next week!

Please note, all animals are cared for in line with our Animal Health and safety Policy

# Meet the Team



Julie Cross  
Deputy Nursery Manager



Sally Hough  
Nursery Manager



Jill Brownlie  
Cook

The Baby Room



Charlotte Trevitt  
Room Leader



Sue Sugar  
Key Person



Karen Roethenbaugh  
Key Person



Katie Chalk  
Key Person

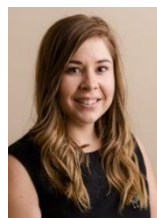
The Tweenie Room



Kiera Jackson  
Room Leader



Lucy Pryor  
Room Leader



Jenny Chamberlain  
Deputy Room Leader



Terri McWilliam  
Key Person

The Barn



Elaine Taylor-Mayes  
Room Leader + Forest School Leader



Holly Monaghan  
Key Person



Keeley Newman  
Key Person

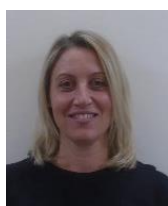


Amanda Ridgwell  
Key Person

Support Staff



Carol Speed  
EY Practitioner



Marta Folgari  
EY Practitioner



Katie MacDonald  
EY Practitioner



Gabriella Adams  
Bank Staff Member

Support Staff



Ann Jackson  
Bank Staff Member



Karen Pollack  
Bank Staff Member



Deborah Cooper  
Bank Staff Member



Rosie Romaine  
Bank Staff Member