



Nursery on the Heath  
Hatfield Heath

Hertfordshire CM22 7EB

Tel. 01279 730 331

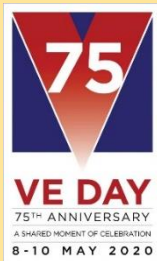
[enquiries@nurseryontheheath.co.uk](mailto:enquiries@nurseryontheheath.co.uk)

[www.nurseryontheheath.co.uk](http://www.nurseryontheheath.co.uk)



## Spring Term Newsletter January 2020

### May Day Bank Holiday 2020



**Please be reminded that the May Day Bank Holiday usually held on the first Monday of the month has moved this year.**

**The Bank Holiday on Monday 4<sup>th</sup> May has been moved to Friday 8<sup>th</sup> May to coincide with the 75<sup>th</sup> anniversary of VE Day (Victory in Europe).**

**This is only the second time ever that the early May Bank holiday has been moved - the first was in 1995 to mark the 50<sup>th</sup> anniversary of VE Day.**

**Look out for the commemorative events across the country that will pay tribute to and honour the incredible sacrifice men and women made during the Second World War, one of the most significant events in our country's history.**

**Monday 4<sup>th</sup> May : Nursery open  
Friday 8<sup>th</sup> May : Nursery closed**

*“At Nursery on the Heath we strongly promote mutual respect, inclusion and fairness for every child and their family who walk through our door.”*

We are delighted to welcome 15 new families to Nursery on the Heath (a.k.a. NOTH), whose children have joined us this Spring Term. We look forward to getting to know you and are honoured to share your child's learning journey during these important early years.

A hive of activity continues to flourish across all three rooms with new children gaining confidence and becoming familiar with their new environment and others taking a big step transitioning between rooms.

Our Pre-schoolers in The Barn are carrying on with their weekly visit to Hatfield Haven Dementia Care Home and will see the return of Forest School at the end of February – more on page 4. Our toddlers upstairs in The Tweenie Room welcome new team member Tracey and continue to enjoy weekly interactive music and movement classes from the wonderful Jo Jingles. Downstairs in The Baby Room our little ones are being introduced to Singing & Signing with Christina, who is teaching the children and staff each week how to sign to traditional nursery rhymes, supported with an amazing selection of props and puppets to engage and inspire. Read on to find out more about what's happening this term.

Should you have any questions about nursery life, sessions, invoicing, funding or your little one's learning and development, please pop into the office for a chat. Our door is always open.

Sally and Julie



Friday 14<sup>th</sup> February  
Valentines Day

Tuesday 25<sup>th</sup> February  
Shrove Tuesday

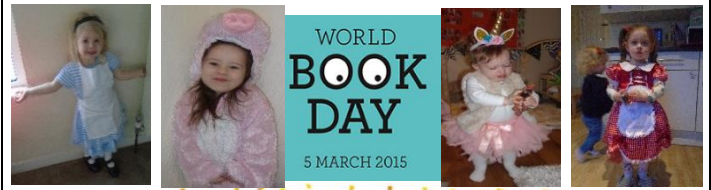
Sunday 1<sup>st</sup> March  
St David's Day

Monday 2<sup>nd</sup> - Friday 6<sup>th</sup> March  
World Book Week

Sunday 22<sup>nd</sup> March  
Mothering Sunday

Friday 10<sup>th</sup> April  
Good Friday (Nursery closed)

Monday 13<sup>th</sup> April  
Easter Monday (Nursery closed)



**CELEBRATE STORIES.  
LOVE READING.**

Monday 2<sup>nd</sup> March - Friday 6<sup>th</sup> March

World Book Day is a celebration of authors, illustrators, books and reading marked in over 100 countries all over the world.

From Monday 2<sup>nd</sup> to Friday 6<sup>th</sup> March, the children are invited to dress up in their favourite book character to celebrate this annual event.

Now in its 23<sup>rd</sup> year, World Book Day encourages children to explore the pleasures of books and reading by providing them with the opportunity to have a book of their own. Thanks to the generosity of National Book Tokens, every child at Nursery on the Heath will receive a £1 book token that can be used to pick one of TEN (exclusive, new and completely free) books. Or, if you'd rather, you can use it to get £1 off any book or audio book costing over £2.99 at a participating bookshop or book club (t&cs apply).



*Nursery  
on the  
Heath*

## Nursery Uniform

If you would like to buy polo shirts or sweatshirts for your little one to wear whilst at Nursery, please contact the office.



royal blue

polo shirts £7  
sweatshirts £10



purple

Size: 2 year old / 3-4 year old / 5-6 year old

Colours: navy / purple / red / royal blue



## Easter Bonnet Competition

In April it will be time to get your creative minds in action with flowers, bunnies, eggs, cakes, chicks and much more for our Easter Bonnet Competition! Find the scissors, dig out some paper and check the back of the cupboard for some glue!



From the beginning of April, all children are invited to wear their creative bonnets and participate in this fun filled Easter event. The finale will take place on Tuesday 14<sup>th</sup> April with an Easter Bonnet Parade, weather permitting outside, with special judge Reverend Dawn Jewson from Hatfield Heath's Holy Trinity church.

## Employee of the Month



### Congratulations Katie!

"For always smiling, never grumbling,  
very helpful & caring."

"Katie has been a superstar in The Tweenie Room."

"For always saying yes and willing to help others."

"We would like to nominate Katie (Tweenies) for employee of the month. More often than not, when I arrive to collect Emme she is sat in the lap of Katie who is reading her stories or talking / playing with her. Katie regularly greets Emme with a big smile and welcomes her in. She has a lovely way about her with a gentle and caring approach to all the children, and we feel that she fully deserves recognition for her kindness, calmness and attentive manner she has with all the Tweenies."

"I'd like to nominate Katie who helps out in The Tweenie Room please. She is so kind and caring with Alfie and really goes out of her way to look after him and settle him. She's so lovely - I think she really deserves employee of the month!"

Many thanks for your all the wonderful feedback we received for the staff. It is so lovely to read your comments and is much appreciated by us all.

## Friendship Bench



Following a very successful sponsored bounce held in October, a spectacular £1,200 was raised for Cancer Research UK for which we are immensely grateful.

Part of the fundraising event included the purchase of a friendship bench, in memory of loved ones lost. A place where the children can sit, meet friends, talk or simply hold hands in comfort.



These are our three possible options, but to decide upon which one to buy, we need your vote! Photos of each bench are displayed in the hall – have a look, talk to your child and place your vote!

Votes close at the end of February.

## Plastic Free update

In January 2019 the Nursery made a pledge to reduce its use of single use plastics. So, what have we done?

- ✓ Plastic bag free weekly shopping delivery
- ✓ Glitter, sequin & straw free crafts
- ✓ Paper plates & cups for parties & celebrations
- ✓ Tupperware instead of plastic freezer bags



We continue this year with our environmentally friendly approach to the business and aim to:

- set up a recycling service with the council
- investigate use of biodegradable baby wipes
- replace disposable plastic aprons with tabards
- research for a glass bottle milk delivery service

We would like to do more, so please let us know if you have any other ideas that we could introduce.



## Hatfield Haven Dementia Care Home



At the beginning of January, The Barn initiated a partnership with Hatfield Haven Dementia Care Home to give the opportunity for two generations to meet. The benefits of

intergenerational care, where children and older people come together to sing, bake, play games, tell stories or just chat, is second to none. The residents teach valuable life lessons and it encourages children to learn to respect their elders. It also makes residents feel more human and encourages them to care about others boosting confidence and feeling of self-worth.

Our aim is to continue our Tuesday visits until the end of April. From May, the experience will be offered to others with the weekly visit taking place on a different day with a different group of children for the Summer Term. More information will follow in due course. In the meantime, please feel free to visit the care home at any time - the residents would love to meet you.



# Forest School



We are delighted to introduce a new format to our Forest School provision that enables us to be able to continue this wonderful outdoor learning opportunity for your child. The new format offers a fair and inclusive provision whilst maintaining the highest safety standards and maximum learning potential for every child.

This term Forest School is taking place on Mondays and Wednesdays for a 10-week course of sessions from Monday 24<sup>th</sup> February to Monday 4<sup>th</sup> May. Each cohort of children will be split into two groups; one group will head off site in the minibus to the local forest and return to Nursery for tea. The other group will head off into the local village for elements of Forest School and return to Nursery for lunch. This new approach will:

- ✓ Ensure safety is a priority and at the forefront of our practice
- ✓ Adhere to the recommended group numbers as heralded by The Forest School Association
- ✓ Facilitate a rich learning environment that supports the development of a relationship between the learner and the natural world
- ✓ Provide an inclusive Forest School provision where every child is given the opportunity to attend one full Forest School session each week
- ✓ Avoid parents/carers collecting from an off-site destination and the difficulty of a two location pick up with younger siblings at Nursery
- ✓ Deliver an uninterrupted course of Forest School sessions allowing the children to become immersed within their chosen area of play

This complementary enhanced provision has been organised fairly and inclusively for all children; therefore, we encourage the two groups of children to remain as arranged for consistency of care, safeguarding purposes and the overall Forest School ethos. Should a space become available for either the village or woodland session, we will endeavour to accommodate individual preferences where possible, subject to legal ratio requirements.

We will continue to reflect and evaluate our practice throughout the term, talk with the children and listen to your feedback. If you have any questions please don't hesitate to talk to our Forest School Leaders Elaine and Holly or pop into the office for a chat, our door is always open.

<u>Mondays</u>	<u>Forest School Kit List</u>	<u>Wednesdays</u>
24 <sup>th</sup> February	Long sleeve thermal top & leggings	26 <sup>th</sup> February - <i>village session</i>
2 <sup>nd</sup> March	Warm clothes to wear over the top, such as jogging bottoms & long sleeve tops	4 <sup>th</sup> March
9 <sup>th</sup> March	Thermal socks underneath regular socks	11 <sup>th</sup> March
16 <sup>th</sup> March	‘Kipsta’ gloves & waterproof gloves	18 <sup>th</sup> March
23 <sup>th</sup> March	Snood	25 <sup>th</sup> March
30 <sup>th</sup> March	Wellington boots with liners	1 <sup>st</sup> April
6 <sup>th</sup> April	Hat	8 <sup>th</sup> April
<del>13<sup>th</sup> April - Bank Holiday</del>	Small waterproof rucksack containing:	15 <sup>th</sup> April
20 <sup>th</sup> April	Spare set of clothes & spare socks	22 <sup>nd</sup> April
27 <sup>th</sup> April	Named water bottle	29 <sup>th</sup> April
4 <sup>th</sup> May		

## What is Forest School?

Forest School is an inspirational process, that offers ALL learners regular opportunities to achieve and develop confidence and self-esteem through hands-on learning experiences in a woodland or natural environment with trees. It is a specialised learning approach that sits within and complements the wider context of outdoor and woodland education. The ethos is shared by thousands of trained practitioners across the UK and beyond. Its roots reach back to early years pioneers in outdoor learning and across the sea to Scandinavia.

# Meet the Team



Julie Cross  
Deputy Nursery Manager



Sally Hough  
Nursery Manager



Elaine Taylor-Mayes  
Third-in-Charge  
Barn Room Leader + Forest School Leader

The Baby Room



Charlotte Trevitt  
Room Leader



Sue Sugar  
Key Person



Karen Roethenbaugh  
Key Person



Katie Chalk  
Key Person

The Tweenie Room



Kiera Jackson  
Room Leader



Lucy Pryor  
Room Leader



Jenny Chamberlain  
Deputy Room Leader



Tracey Clay  
Key Person

The Barn



Terri McWilliam  
Key Person



Holly Monaghan  
Key Person



Keeley Newman  
Key Person

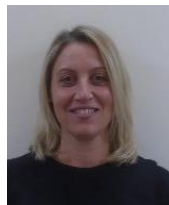


Amanda Ridgwell  
Key Person

Support Staff



Carol Speed  
EY Practitioner



Marta Folgori  
EY Practitioner



Katie MacDonald  
EY Practitioner



Rosie Romaine  
Work Experience Student

Support Staff



Ann Jackson  
Bank Staff Member



Karen Pollack  
Bank Staff Member



Deborah Cooper  
Bank Staff Member



Jill Brownlie  
Cook