

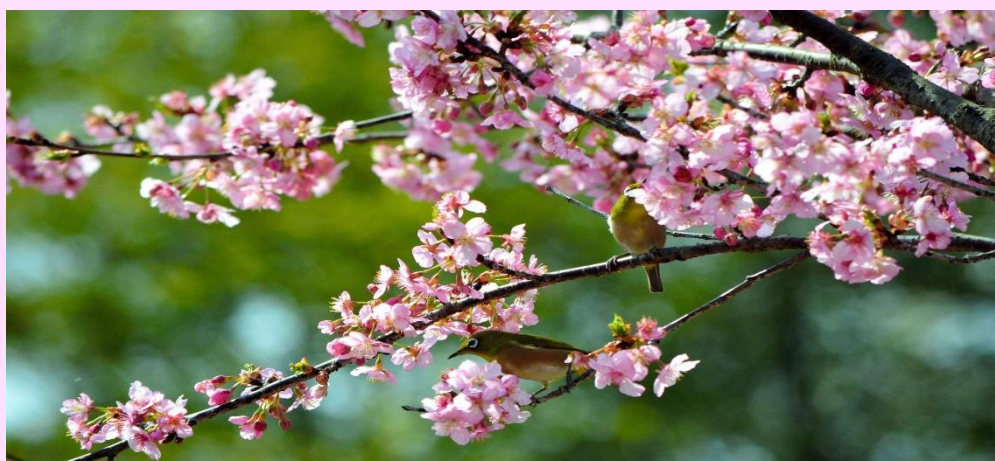
January 2019

# Spring Term Newsletter

*Nursery  
on the  
Heath*

Nursery on the Heath  
Hatfield Heath  
Hertfordshire CM22 7EB  
Tel. 01279 730 331

Email  
enquiries@nurseryontheheath.co.uk  
Web www.nurseryontheheath.co.uk



## Happy New Year

We hope you all had a lovely Christmas and enjoyed the extended break. On behalf of all the staff a very big thank you for the cards, gifts, chocolates and bottles of bubbles! It was very generous of you all yet very much appreciated. We hope Santa spoilt you too!

During the Christmas break, we were busy sorting, cleaning, tidying and painting the rooms for the term ahead. Holly has joined the Pre-schoolers downstairs in The Barn and we welcome Ellie, a new team member who joins Lucy and her team upstairs with our toddlers.



### The Baby Room

A home away from home and a gentle first step into Nursery life for our little ones.

### The Tweenie Room

A cosy space for our active toddlers who are ready to explore, discover and create.

### The Barn

A large open space for our pre-schoolers with free access to two outdoor spaces to play, learn and develop.

As so many of us start the year with new healthy eating regimes and exercise programmes to get in shape, the children are doing their bit to support you! Vegetables are on offer in the home corners for the babies and children to explore, touch, smell and feel, as well as chop, peel and slice to make delicious soup. Wonderful, colourful artwork is being created from vegetable printing and 3D models are being made with playdough where size, colour and shape is being discussed.

Please read on to find out the Nursery's New Year's Resolution – what's yours?





## Loose Parts Wanted!

Corks  
 Jars  
 Boxes  
 Tubes  
 Cotton reels  
 Golf tees  
 Pots  
 Stones  
 Scaffolding planks  
 Shells  
 Buttons  
 Pebbles  
 Feathers  
 Pegs  
 Wood off cuts  
 Fir cones  
 Plumbing parts  
 Newspapers  
 Unused wall/lining paper



## Loose parts:

- encourages creativity and imagination
- can be used anyway children choose
- can be used in many different ways
- develops more skill and competence than many modern plastic toys
- encourages open ended learning
- can be used in combination with other materials



## NOTH's New Year Resolution:

### Go plastic and glitter free!

Sir David Attenborough's Blue Planet II hammered home the tragedy of plastic pollution in our oceans. Did you know ...

- 12 million tonnes of plastic ends up in the sea each year
- Only 9% of plastic has ever been recycled
- Approximately 700 marine species have been found entangled in plastic
- 1 million plastic bottles are bought worldwide every minute?

To try and make a real difference to the amount of single-use plastic that ends up in the ocean, NOTH would like to take a small step and do its bit to help save our planet by going plastic and glitter free.

To begin with, plastic resources will gradually be replaced with loose parts, real or nursery-made ones by the children, such as painted salt dough 'food' for the home corner. We will:

- ✓ no longer buy plastic straws or cotton buds
- ✓ begin to reduce our use of plastic bags
- ✓ use reusable cups/bottles for refreshments (staff).

## Spring Term Dates for your Diary

25 January - Burn's Night  
 14 February - Valentine's Day  
 5 March - Shrove Tuesday (Pancake Day)  
 31 March - Mother's Day  
 31 March - clocks go forward to British Summer Time  
 19 April - Good Friday  
 22 April - Easter Monday  
 28 April - London Marathon

*If you celebrate a festival at home, or, are taking part in a charity event and you would like NOTH to get more involved, please let us know.*





## FOREST SCHOOL

Forest School for The Barn children will recommence next month! This term the children attending Nursery on Mondays and Thursdays will have the opportunity to visit and explore the wonderful Birchanger Woods.

## DATES

MONDAYS – 11, 18, 25 February; 4, 11, 18, 25 March; 1, 8, 15 April

THURSDAYS – 14, 21, 28 February; 7, 14, 21, 28 March; 4, 11, 18 April

## PARENT INFORMATION MEETING

If your child is to attend Forest School for the first time this Spring Term, you are invited to come along to a Parent Information Evening at 6.30pm Wednesday 23<sup>rd</sup> January 2019. A presentation and Q&A session will be given and there will be a Forest School Information pack made available to take home with you. Tea & Coffee will be served. Email invitations will be sent out shortly – please RSVP. Thank You.

## CONTRIBUTIONS

Whilst the Nursery absorbs many of the Forest School costs, a small contribution is going to be charged from now on so that we can continue to offer this excellent provision for the children. The monies will go towards the cost of the minibus and the amount will be tailored according to the number of trips your child will make.

Personalised emails with full details will be sent out at the end of this month.

## WHAT IS FOREST SCHOOL?

Forest School supports the development of a relationship between the children and the natural world. It promotes the holistic development of all those involved and offers the opportunity to take supported risks appropriate to the environment and to themselves. As children are stimulated by the outdoors, Forest school fosters a rich learning environment in which over time, increases the children's self-belief, resilience, confidence, independence, learning capacity, enthusiasm, communication, problem-solving skills and emotional well-being. This experience provides the children with transferable skills that will support them throughout the rest of their lives.



For all Forest School enquiries please email Elaine : [enquiriesnothforestschool@yahoo.com](mailto:enquiriesnothforestschool@yahoo.com)

# Get Your Feeder Ready!

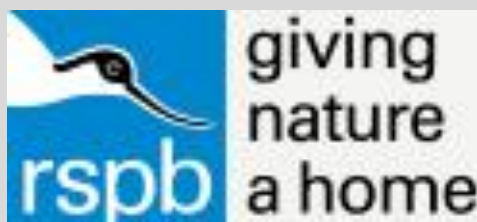


This year The Big Garden Birdwatch takes place 26-28 January 2019.

For 40 years, the RSPB have been asking us to count the birds in our gardens – and apparently we've been brilliant at it! With over half a million people now regularly taking part, coupled with almost 40 years worth of data, Big Garden Birdwatch allows the RSPB to monitor trends and helps them understand how birds are doing.

While some changes in bird numbers can seem scary - we've lost more than half our house sparrows and some three-quarters of our starlings - it isn't all doom and gloom. Since Birdwatch began blue tit numbers have risen by 20 per cent and the woodpigeon population has increased by a whopping 800 per cent.

For more info or to order your pack please visit <https://www.rspb.org.uk/get-involved/activities/birdwatch/everything-you-need-to-know-about-big-garden-birdwatch/>



# Thank You



*"On behalf of all of us at KidsOut, I would like to extend our immense gratitude for your support of our 2018 Giving Tree initiative. KidsOut was overwhelmed by the response to Giving Tree 2018. Over 750 companies signed up and we were able to provide brand new toys for every child in a Women's Aid Refuge in the UK this Christmas."*

*Thank you.*

*Gavin Bedford*



## Employee of the Month



### Deborah Cooper

Nominated by her peers, Deborah was recognised as December's Employee of the Month for:

- \* **her energy** - Deborah is always happy and a great person to be around
- \* **her teamwork** - Deborah is a great new addition to the NOTH family – we love her!
- \* **her French lessons** - Deborah est magnifique! Elle chante et compte en français avec les enfants – super!
- \* **her creativity** - Deborah's puppet shows are wonderful and her role play is brilliant!

# Slippers!

To support our 'home from home' ethos we have introduced a slipper policy. Slippers will keep little toes warm and protected, as well as help keep our carpets clean from outside dirt and debris.

Please bring in a pair for your child as soon as you have the opportunity.



Thanking you in advance for your support and cooperation.

## Part-time Cook Wanted!



Can you cook? Do you love food & healthy eating?

We are seeking to appoint a cook to work independently on Fridays to prepare and make the children's meals and manage individual special dietary requirements. Previous kitchen experience desirable.

If you, a family member or friend would like to know more, please get in touch:

Tel. 01279 730 331

Email enquiries@nurseryontheheath.co.uk



# Meet the Teams



Julie Cross  
Deputy Nursery Manager



Sally Hough  
Nursery Manager



Jill Brownlie  
Cook

## The Baby Room



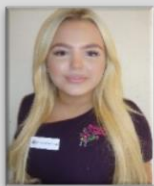
Marisa Pikett  
Third-in-Charge



Terri McWilliam  
Room Leader



Sue Sugar  
Key Person



Charlotte Trevitt  
Key Person



Karen Roethenbaugh  
Key Person



Loren Bagley  
Apprentice

## The Tweenie Room



Lucy Pryor  
Acting Room Leader



Megan Hillier  
Key Person



Emma Hart  
Key Person



Jenny Chamberlain  
Key Person



Marta Folgari  
EY Practitioner



Danielle (Ellie) Collier  
EY Practitioner

## The Barn



Elaine Taylor-Mayes  
Forest School Leader



Kiera Jackson  
Room Leader



Leanne Smith  
Key Person



Keeley Newman  
Key Person



Carol Speed  
EY Practitioner



Holly Monaghan  
Key Person

## Support Staff



Katie MacDonald  
EY Practitioner



Emily Price  
Bank Staff Member



Nicole Pedder  
Bank Staff Member



Ann Jackson  
Bank Staff Member



Karen Pollack  
Bank Staff Member



Deborah Cooper  
Bank Staff Member

